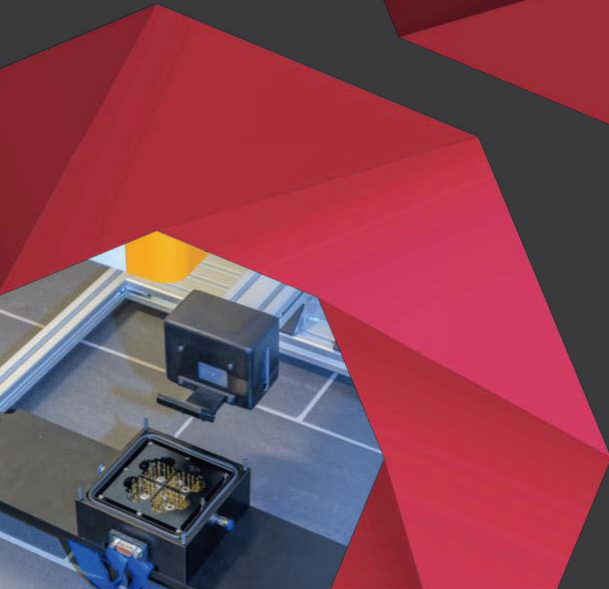
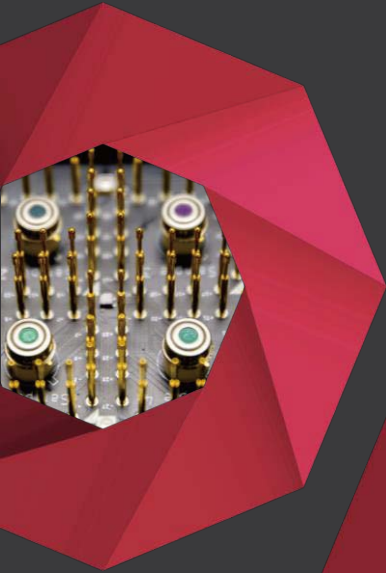


# Litos Lite

Parallel JV and Stability Measurement Platform  
for Solar Cells



---

Up to 56 parallel  
channels

---

MPP tracking

---

Designed to  
meet ISOS  
protocols for  
device  
degradation

[www.fluxim.com](http://www.fluxim.com)

 swiss made software

 **FLUXiM**

# Perform Parallel JV & Stability Measurements on Solar Cells

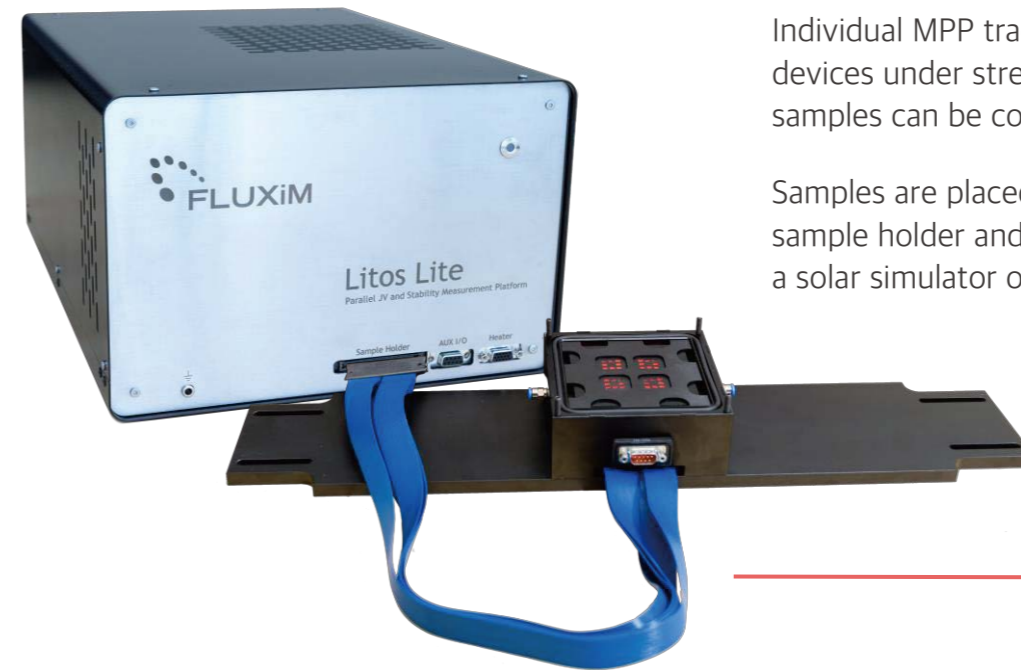
Litos Lite is a platform to perform **parallel JV** and stability measurements on **perovskite**, and **organic solar cells**. This innovative characterization tool is able to perform JV measurements on up to 56 parallel channels and stress the solar cells with maximum power point tracking, constant voltage or constant current.

## Litos Lite Features

Best for	High-throughput, high-precision JV and stressing of PV
Design	Control box and sample holder connected with a cable. External illumination.
No. of channels	8, 16 to 56 independent channels available.
No. of chambers	1 chamber. Exchangeable sample holders.
Voltage	-10 V to 10 V
Current per channel	50 mA. Can combine channels. Up to 50 x 56 = 2.8 A
Stressing options	MPP, Voc, Jsc, selectable per channel.
Temperature control	Heating up to 125°C
Illumination	External illumination. Can be a solar simulator. Can develop custom illumination, e.g. LED array.
Sample Geometry	Sample holder customized. No restriction on geometry.
Atmosphere control	Airtight chamber. Can connect Fluxim's Atmosphere module.
Solar Simulator Compatibility	Wavelabs Sinus 70/220 and LS2.*
Software	Professional, user friendly software is the biggest asset of Litos Lite

\* The Litos Lite software can be configured to support other solar simulators.

# Device Stressing According to the ISOS Protocols



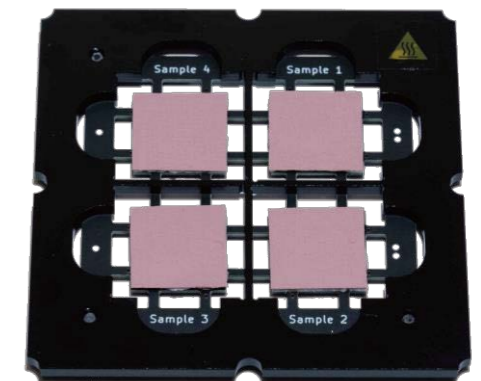
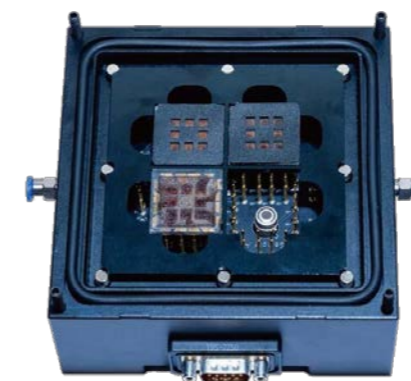
Individual MPP tracking is possible on each of the devices under stress. The temperature of the samples can be controlled up to  $T = 125^{\circ}\text{C}$ .

Samples are placed inside an airtight customized sample holder and illuminated from the top with a solar simulator or an LED array.



## Custom-Made Sample Holders

- Sample dimensions: up to 10 × 10 cm<sup>2</sup>.
- Heating stage with resistive heaters (RT - 125 °C).
- IR temperature sensors for tracking of the sample temperature
- Thermal pads to assure temperature uniformity under the samples.
- Custom-made contact boards.
- Sample holders designed to customer's layout.



# Litos Lite

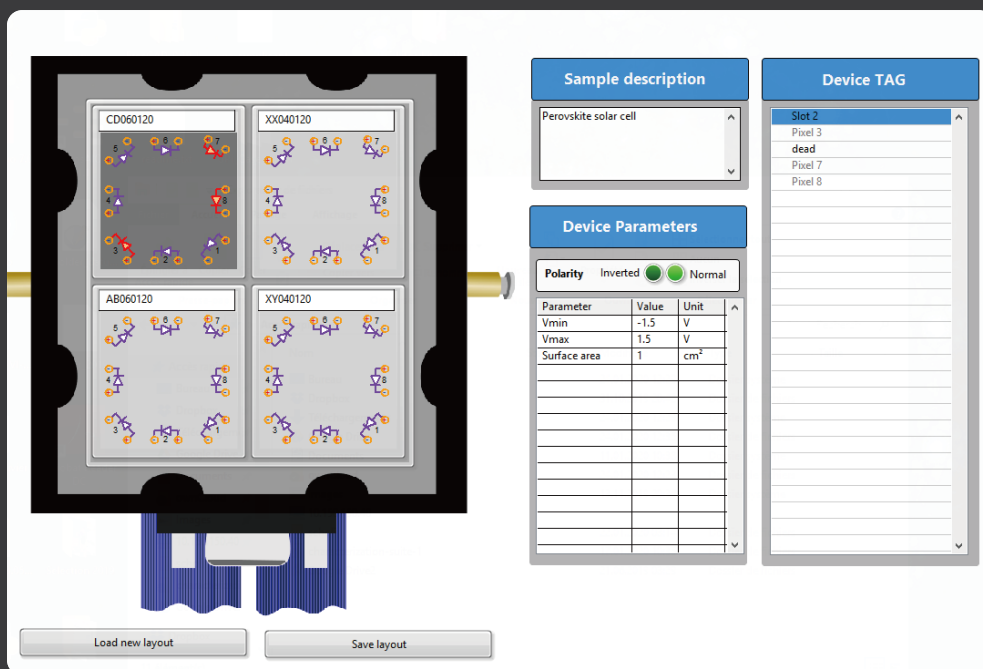
Parallel JV and Stability Measurement Platform for Solar Cells



# Solar Simulators can be Controlled by the Litos Lite Software

Litos Lite provides an AUX port for triggering external equipment.

The Litos Lite software is already configured to control the **Wavelabs** SINUS 70, 220 and LS2 AAA solar simulators.



The Litos Lite software allows the user to easily switch between sample layouts, construct recipes with multiple steps and acquire and manage data.

Full technical support is included with every purchase of Litos Lite. Contact us today to discuss how Litos Lite can accelerate your research.

[hardware@fluxim.com](mailto:hardware@fluxim.com)



## Trusted by Academics & Industry



ISSOFT

(주)이즈소프트 | 플릭심 한국 공식대리점

경기도 군포시 공단로 140번길 46 엠테크노센터 1003~4호

T 031-436-1422 | [support@is-soft.co.kr](mailto:support@is-soft.co.kr) | [www.isssoftopticalgroup.co.kr](http://www.isssoftopticalgroup.co.kr)