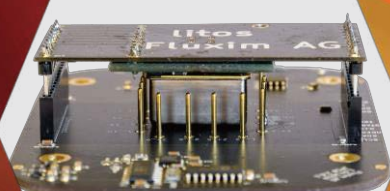


# Litos

Advanced LED Lifetime Stability  
Measurement System



---

16 or 32  
Parallel  
Stressing  
Channels

---


4 Stressing  
Chambers

---

Accelerated  
Lifetime  
Testing

[www.fluxim.com](http://www.fluxim.com)



 swiss made software

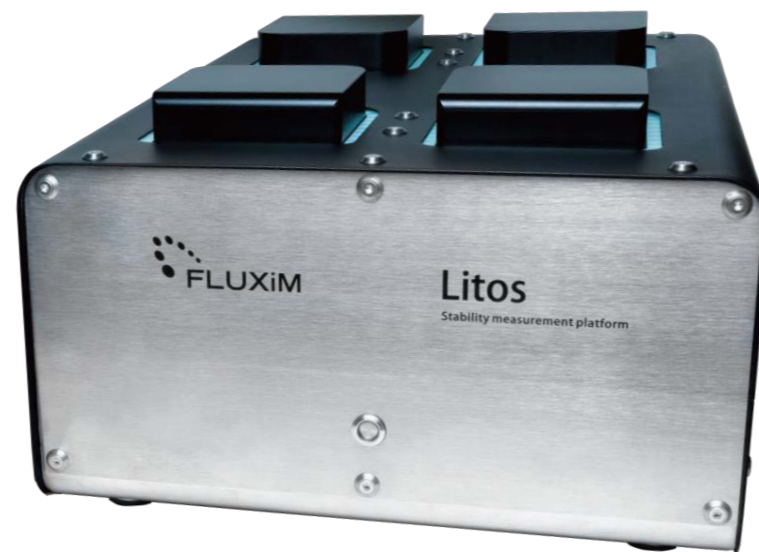
# LED Stability Lifetime Measurement System

Litos is an advanced LED stability lifetime measurement system. It has 16 or 32 parallel stressing channels distributed over 4 chambers. The sample's temperature is regulated over a temperature controlled stage.

The wide range of stress conditions inside a highly controlled experimental environment and full automation make it a primary choice for researchers that want to understand the degradation behavior of *organic, perovskite and quantum dot LEDs*

## Litos Lite Features

- Advanced lifetime analysis
- 16 or 32 parallel channels
- Flexible sample design
- Temperature control
- 4 stressing chambers
- Fully automated
- Professional, user friendly software



## Advantages

- Design customized to customer's sample layout (multiple layouts possible)
- Modular: connect several systems together
- Automatic parameter extraction and plotting over time with Paios integration

## Technical Specifications

Voltage range	-9 V to 9 V
Maximum current	60 mA /channel
Temperature range	0-85°C
Sample size	Up to 5x5cm <sup>2</sup> diameter

# For Organic/Perovskite and Quantum Dot LEDs

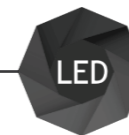
Constant current, constant voltage

Available for top and bottom emission LEDs

Intermittent JV and JVL measurements

In-situ spectrometer available (extra module) for electro luminescence measurements

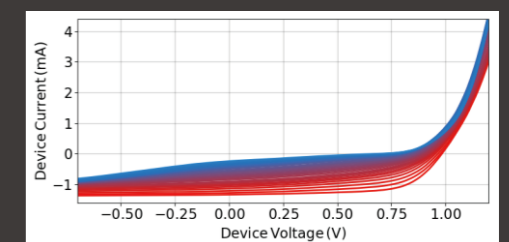
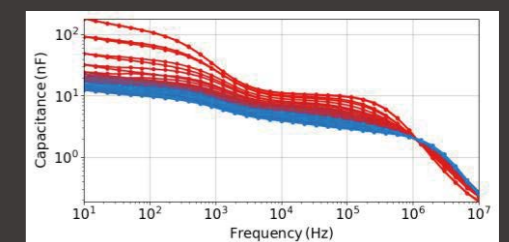
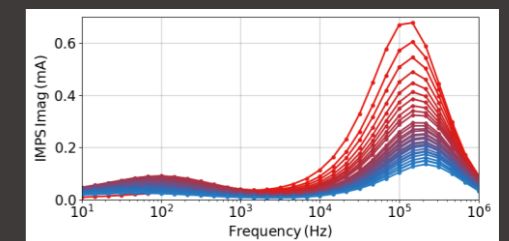
Patented LED accelerated aging and lifetime estimation integrated



## Litos paios Integration

When paired with our platform Paios full characterization of the devices can be automatically performed including:

- Transient measurements (CELIV, DLTS, TEL...)
- Impedance spectroscopy / CV / IMPS / IMVS
- Dedicated stressing routines for OLEDs
- All measurements as function of temperature
- Understand the degradation mechanisms of LEDs with an automated routine of stressing and analysis



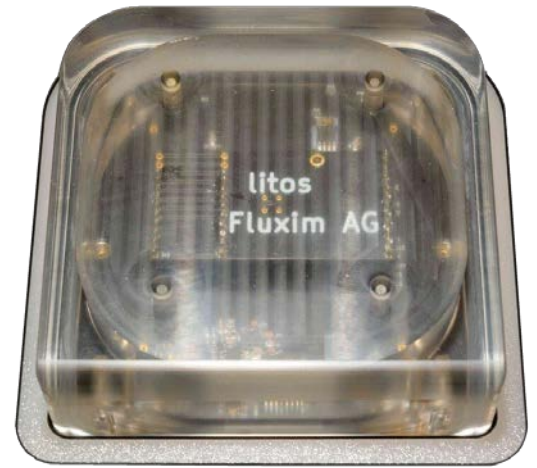
Litos

Advanced LED Lifetime Stability Measurement System

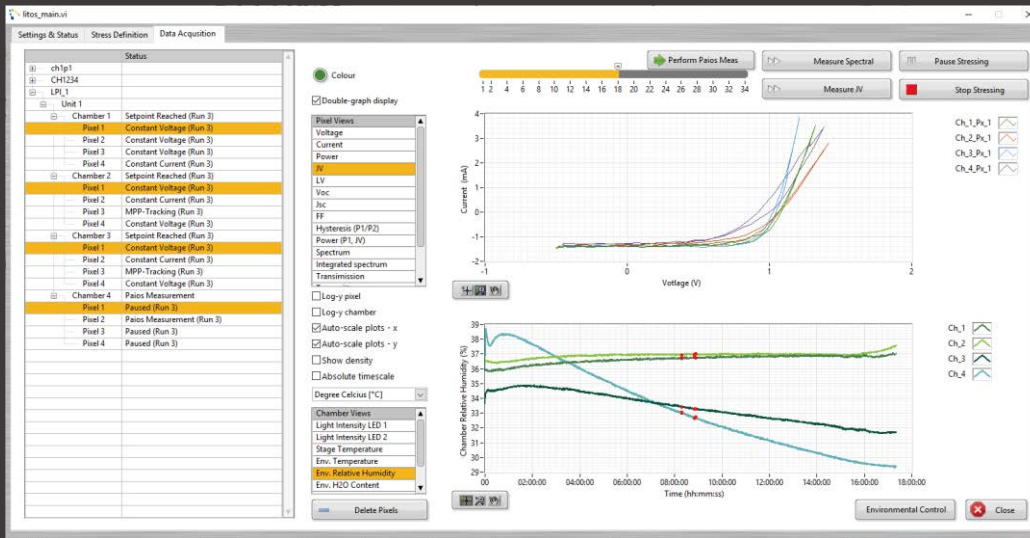


# Custom-Made Sample Holders

Litos sample holders are custom-made according to the specific layout of our customers. Multiple boards with different layouts can be delivered. The board can be quickly replaced in the testing chamber by the user. Depending on the selected configuration, up to 8 LED pixels can be stressed individually in each chamber (32 devices in total).



# Perform In-Depth Degradation Analysis



## Support

Full technical support is included with every purchase of Litos. Contact us today to discuss how Litos can advance your R&D.

[hardware@fluxim.com](mailto:hardware@fluxim.com)



# Trusted by Academics & Industry



**ISSOFT** (주)이즈소프트 | 플릭심 한국 공식대리점

경기도 군포시 공단로 140번길 46 엠테크노센터 1003~4호

T 031-436-1422 | [support@is-soft.co.kr](mailto:support@is-soft.co.kr) | [www.isssoftopticalgroup.co.kr](http://www.isssoftopticalgroup.co.kr)